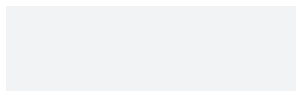


## COLORS AND FINISHES

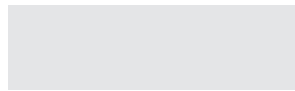
### THERMALCLAD PANEL COLORS

Varco Pruden uses high quality paint systems designed to provide long-term performance and protection. Each coating is formulated with thoroughly researched, tested and field proven pretreatments, primers, resins and pigments that can meet your design and performance requirements.

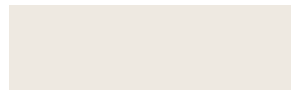
This paint system combines ceramic pigmentation with polyvinylidene fluoride for superior, long-lasting performance. PVDF finishes are respected for their durability, resistance and color retention. Our KXL finishes are warranted for up to 25 years\*.



Cool Cotton White



Cool Arctic White



Cool Egyptian White



Cool Imperial Blue



Cool Straw Gold



Cool Sierra Tan



Cool Cobalt Blue



Cool Colonial Red



Cool Hemlock Green



Cool Granite Gray



Cool Jade Green ●



Cool Leaf Green



Cool Bermuda Green



Cool Zinc Gray ●



Cool Dark Bronze



Cool Weathered Copper ●



Cool Parchment



Cool Old Town Gray ●



Cool Bright Red



Cool Metallic Silver ●



Cool Copper Penny ●



Cool Ebony



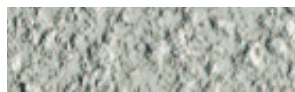
Tuff Wall Stucco White\*



Tuff Wall Light Stone\*



Tuff Wall Medium Beige\*



Tuff Wall Light Gray\*

#### AVAILABILITY

● Non-stocked color

**Colors printed on this page not exactly match actual panel colors. Please request panel swatches for true color match.**

\*Tuff Wall Stucco comes with a 10 year finish warranty

## LONG-TERM BEAUTY, UNMATCHED PROTECTION, COOL COLOR PERFORMANCE AND SUPERIOR QUALITY.

PVDF finishes are respected for their durability, resistance and color retention. Our KXL finishes are warranted for up to 25 years\*. 70% PVDF finishes meet both Kynar 500 and Hylar 5000 specifications. Kynar 500® is a registered trademark of Arkema. Hylar 5000® is a registered trademark of Solvay Solexis. Galvalume® is a registered trademark of BIEC International, Inc.

All colors shown approximate actual paint colors as accurately as possible. Actual paint colors may vary. Colors in this guide are for reference only. Varco Pruden Buildings reserves the right to change color offerings shown here without notice. Painted metal samples are available.

PHYSICAL AND PERFORMANCE PROPERTIES		
Specular Gloss at 60°	ASTM D 523 <sup>(1)</sup>	25-35
Pencil Hardness	ASTM D 3363	HB to 2H
T-Bend <sup>(2)</sup>	ASTM D 4145	0T to 3T <sup>(2)</sup> No loss of adhesion
Adhesion	ASTM D 3359	No adhesion loss
Humidity Resistance 100% RH 2,000 Hours	ASTM D 2247	HDG or Galvalume: No field blisters
Reverse Impact	ASTM D 2794	3.0 x metal thickness, no cracking or adhesion loss
Salt Spray Resistance 2,000 Hours	ASTM B 117	HDG or Galvalume: creep from scribe no more than 1/16" (2mm) no blisters
South Florida Exposure	ASTM D 2244 ASTM D 4214	Color: No more than 5ΔE Hunter units at 25 years Chalk: Rating no less than 8 at 25 years. Film integrity: 30 years
Flame Test	ASTM E 84	Class A coating
Water Immersion 500* Hours 110 F	ASTM D 870	No loss of adhesion
Drew Cycle Weatherometer 1000 Hours	ASTM D 3361	Color change: No more than 5Δ Hunter units. Chalk: Rating no less than 8
Abrasion Resistance	ASTM D 968	Method A, 65 +/- 10 liters

1. American Society for Testing and Materials. 2. Fracturing or rupturing of substrate will rupture coatings. Heavy gauge and clad steel substrates impose limitations on formability. KXL coatings are generally flexible beyond the point of substrate rupture.

### VP COOL COLOR INFORMATION

Color Name & Code	Solar Reflectance <sup>1</sup>	Thermal Emittance <sup>2</sup>	SRI <sup>3</sup>	LEED 2.2 Low Slope Initial SRI>or=78	LEED 4.0 Low Slope Initial SRI>or=82	LEED 2.2 Steep Slope Initial SRI>or=29	LEED 4.0 Steep Slope Initial SRI>or=29
Cool Arctic White - BN5W183B	0.64	0.84	76	No	No	Yes	Yes
Cool Bermuda Green - BN5G176B	0.30	0.84	29	No	No	Yes	No
Cool Cobalt Blue - BN5L148B	0.33	0.84	33	No	No	Yes	No
Cool Colonial Red - BN5R143B	0.34	0.85	35	No	No	Yes	No
Cool Cotton White - BN5W184B	0.76	0.84	93	Yes	Yes	Yes	Yes
Cool Dark Bronze - BN5N239B	0.32	0.84	32	No	No	Yes	No
Cool Ebony - BN5B114B	0.30	0.84	29	No	No	Yes	No
Cool Egyptian White - BN5I137B	0.63	0.83	74	No	No	Yes	Yes
Cool Granite Gray - BN5A221B	0.55	0.84	63	No	No	Yes	Yes
Cool Hemlock Green - BN5G175B	0.34	0.85	35	No	No	Yes	No
Cool Imperial Blue - BN5L149B	0.30	0.84	29	No	No	Yes	No
Cool Leaf Green - BN5G174B	0.30	0.85	30	No	No	Yes	No
Cool Sierra Tan - BN5N235B	0.49	0.84	55	No	No	Yes	Yes
Cool Straw Gold - BN5I136B	0.61	0.84	72	No	No	Yes	Yes
Cool Zinc Gray - BN5A222B	0.37	0.85	39	No	No	Yes	Yes

Authorized Independent Testing Laboratory Results: 1 = AITL ASTM C1549 CRRC Tested Lab Results. 2 = AITL ASTM C1371 CRRC Tested Lab Results. 3 = AITL ASTM E1980 CRRC Tested Lab Results. (Low Slope ≤ 2:12; Steep Slope >2:12)

Note: All panels formed from light gauge metal may exhibit waviness, also known as "Oil Canning," commonly occurring in, but not restricted to, flat portions of a panel. This inherent characteristic is not a defect of material and is not cause for rejection.

- Kynar 500® is a registered trademark of Arkema.
- Hylar 5000® is a registered trademark of Solvay Solexis.
- Galvalume® is a registered trademark of BIEC International, Inc.

\*Tuff Wall Stucco comes with a 10 year finish warranty